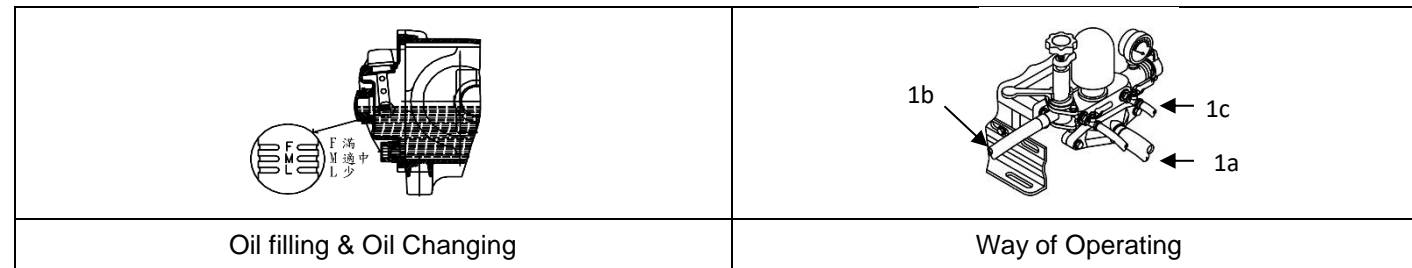


TS-28 DD STD Power Sprayer Manual



1. Oil Filling & Oil Changing

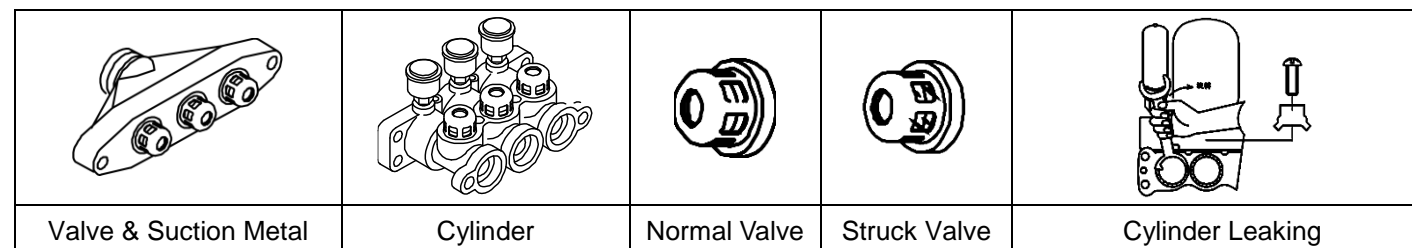
Fill #40 Oil through the oil hole. Keep the oil level just half of the oil gauge. Change the oil after 50 hours use for the first time and every 100 hours since then. The proper time for changing oil is after operating and the machine is still warm. Remove the drain plug and begin draining.

2. Grease Filling

The three grease cups on the cylinder must always be filled with grease. After using for every two hours, wind the grease cups about two circles per time.

3. Spray

- Fix firmly the suction hose (1a), overflow hose (1b) and spraying hose (1c) on the suction metal, over flow body and cock respectively. Make sure they must be set firmly and let no air leak out.
- Operate the power and start the power sprayer.
- Turn off the cock.
- After the power sprayer is normally operating, adjust the pressure screw. Then turn on the cock and begin operating the power sprayer.



4. Trouble Shooting

- Feeding failure & pressure instability :
 - Check whether the suction hose is any leaking of air. Tight it up.
 - Check whether the strainer is stuck. Clean it up, if necessary.
 - Turn on the cock for a little while to let out the air left in the feeder and then turn it off.
 - Check whether the suction metal, cylinder and six valves are stuck. Clean it up, if necessary.
 - Check the flat valve and valve seat to see whether they are damaged.
 - Check whether the valve springs are damaged.
- Cylinder Leaking :
 - Take the stopper away from the cylinder with screw driver.
 - Remove the plunger cover and wind by the three grands on the cylinder (for 1/3 round ~ 1/2 round). If leaking is still uncontrollable, change the V-packing in the cylinder.
- Pressure Falling :
 - Check whether the V-belt is loose.
 - Check whether the spraying hose and coupling packing of spraying hose are broken. Renew the parts if necessary.

5. Maintenance

- Operate the power sprayer with clean water for about 5 minutes after use in order to clean the pesticide left in the machine.
- Remove the suction hose, over flow hose, and spraying hose. Then wipe every part of the machine dry.
- Check the oil in the crank case. Refill oil, if necessary.
- Check whether every screw is set firmly.
- Check whether there is any leak of oil.

6. Caution

- During operation, please don't reach out your hands into space of revolving belt wheel to prevent you from being harmed.
- Please check if there is enough oil before operating machine.
- Please check if gasoline, diesel oil or cooling water are enough before operating machine.
- Please check if contact of electric source and insulation are under good condition before operating machine.
- The spraying machine sprayed by pesticide or chemical liquid is prohibited to be used for pumping water to prevent poison.
- Please renew pressure gauge if it is damaged in order to maintain machine's safety.
- Loosen pressure adjusting screw counterclockwise, after using this machine.

7. Warranty

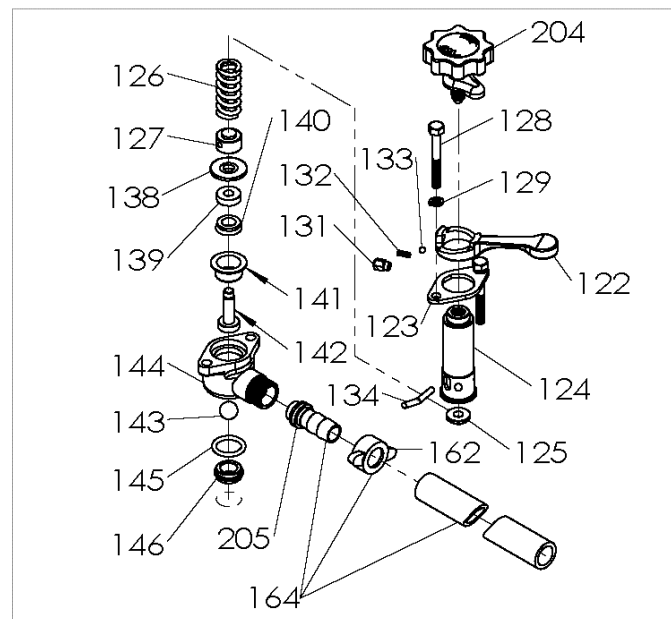
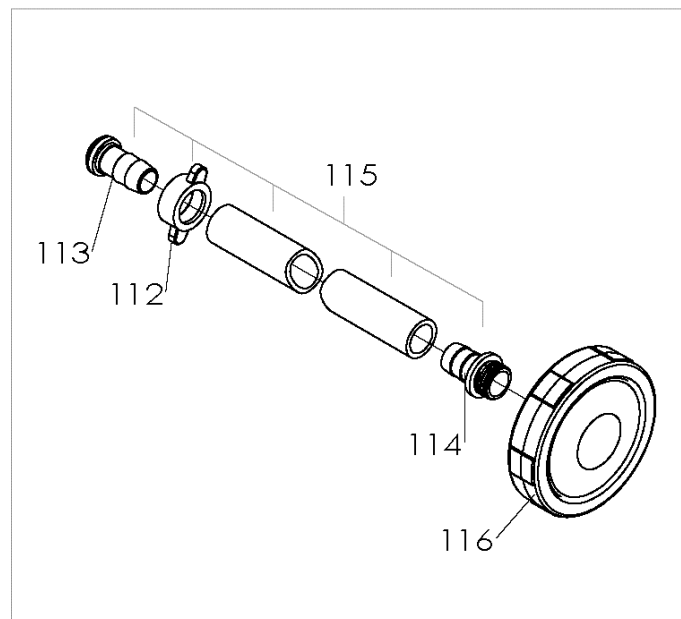
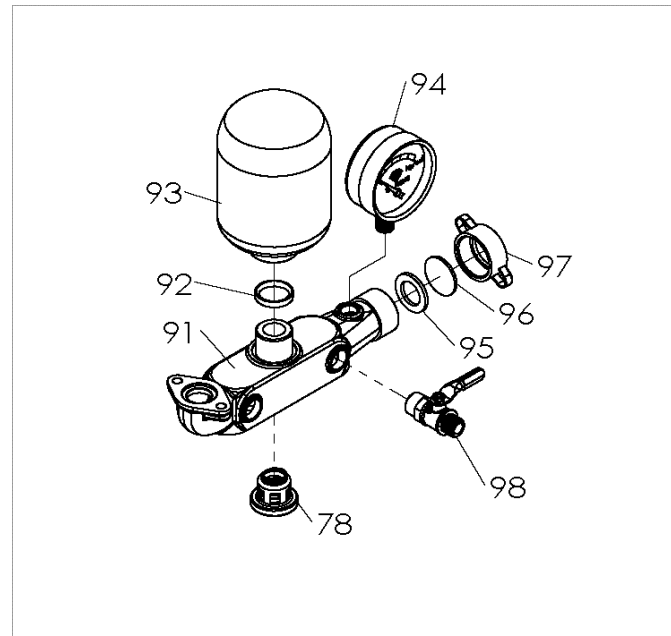
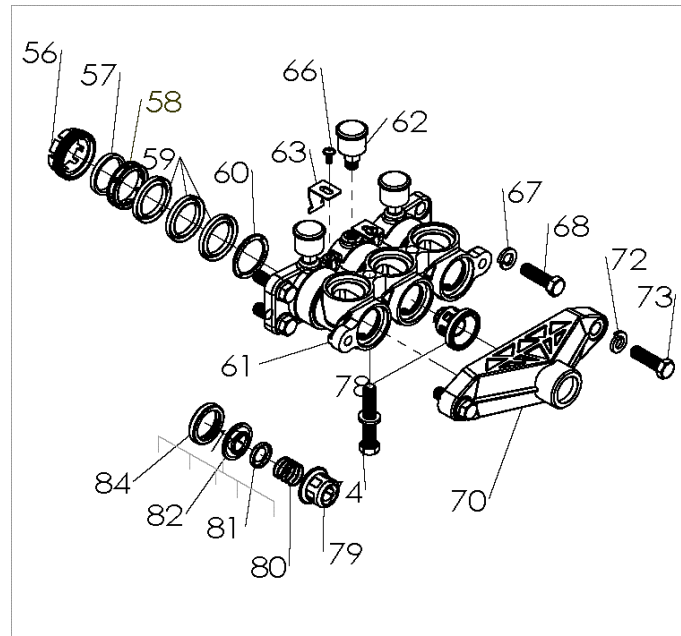
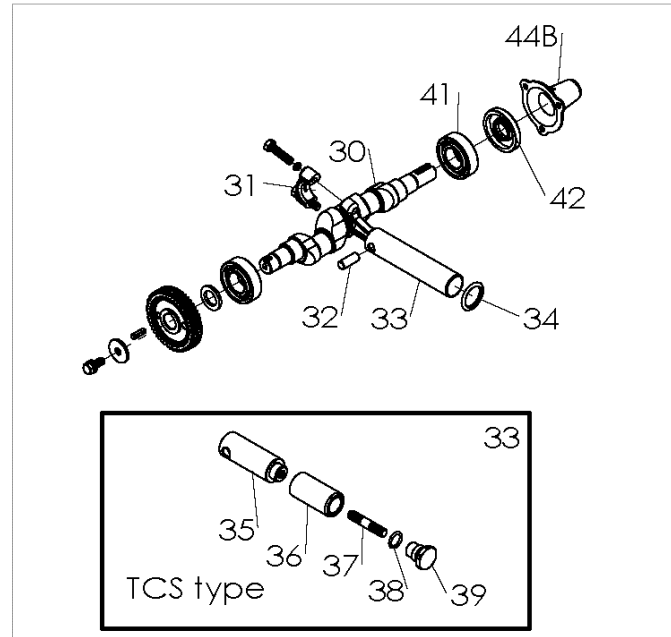
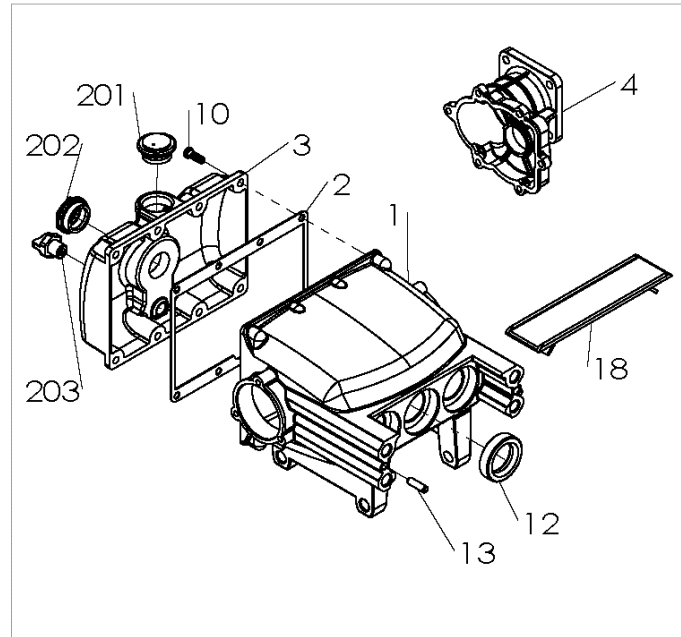
- Warranty : This warranty involves any failure parts produced or supplied by manufacturer when failure part caused any abnormal performance. During warranty period, the manufacturer offer free maintenance.
 - No service charge and expense of replaced part are required with warranty.
 - Warranty period : one year after delivery.
- The manufacturer is not responsible for damage provokes in case of:
 - A serious lack of foreseen maintenance.
 - Damages caused by the nature disaster such as earthquake.
 - Modifications or intervention that are not authorized by the manufacturer.
 - Non-normative uses that contrary to the specific.
 - The use of non-original spare parts and assigned oil for the pump.
 - Natural aging situation such as rust on surface caused by time.
 - Not inquire to factory or your local distributor when damage occurs.
 - The performance is still good base on power sprayer's registered spec. even some noise or vibration show up.
 - Using the pump without following the instructions of this manual.
- The manufacturer is not responsible for expense provoked in case of:
 - Losing of failure parts during warranty application.
 - Any direct and/or indirect lose comes from warranty items.
 - Regarding to warranty, all seals, packing, O-rings and oil are excluded.


TANONG PRECISION TECHNOLOGY CO., LTD.

No.6, Fengming Rd., Daya Dist., Taichung City
 428, Taiwan (R.O.C.)
 Tel : +886-4-25662106
 Fax: +886-4-25662109
 web: www.tanong.com.tw
 E-mail: info@tanong.com.tw

TS-28DD TCS-28DD 直結型(STD標準型)

第零版



Pos.	Parts No.	Parts Name	Q'ty	Specification	Pos.	Parts No.	Parts Name	Q'ty	Specification
1	010-2803-241	Crank case	1		94	055-2200-101	Pressure Gauge	1	
2	013-2803-000	Gasket, crank case	1		95	123-2800-000	Packing	1	
3	011-2803-241	Cover, crank Case	1		96	056-2800-000	Washer	1	
4	PE4-GX00-010	Reduction gearbox	1	TS-22DD/28DD	97	057-2800-000	Coupling	1	1"
10	142-0104-001	Screw	8	1/4x5/8+S	98	051-2800-000	Cock	2	
12	130-2800-000	Oil Seal, plunger	3	28x42x10	112	057-2800-000	Coupling	1	1"
13	012-2200-000	Pin	2		114	032-2800-260	Core, Strainer	1	1"
18	016-2800-260	Plunger Cover	1		115	A03-S010-085	Suction Hose	1	1" x8.5ft
30	020-2800-222	Crank Shaft	1		116	033-2800-000	Strainer Ass'y	1	
31	021-2800-241	Connecting Rod	3		122	074-2800-000	Lever	1	
32	023-2800-000	Plunger Pin	3		123	073-2800-000	Seat Spring box	1	
33	022-2800-002	Plunger	3		124	070-2800-000	Spring Box	1	
	022-3430-000	Plunger Ceramic	3	(TCS-343)	125	076-2800-000	Upper Metal	1	
34	027-2800-000	Stopping Ring, Water	3		126	078-2800-000	Spring	1	
35	022-3430-001	Plunger Head	3	(TCS-343)	127	077-2800-000	Under Metal	1	
36	022-3430-003	Ceramic Bush	3	(TCS-343)	128	143-0104-000	Bolt	1	1/4" x48
37	022-3430-002	Bolt	3	(TCS-343)	129	144-0600-001	Washer Spring	1	M6
38	120-1419-000	O-Ring	3	14x2.5(TCS-343)	131	074-2800-003	Cap Nut	1	
39	022-3430-004	Plunger Cap	3	(TCS-343)	132	074-2800-002	Spring	1	
40	025-2800-000	Key	1		133	074-2800-001	Steel Ball	2	
41	024-2800-001	Bearing	2		134	075-2800-000	Pin	2	
42	131-2800-000	Oil Seal, Crank Shaft	1	20x52x8	138	124-2800-000	Packing	1	
44A	026-2800-001	Cover, Oil Seal-A	1	TS-28	139	061-2800-000	Spindle Guide	1	
56	044-2800-000	Grand	3		140	062-2800-000	Oil Seal	1	
57	041-2800-000	Grease Packing	3		141	063-2800-000	Box, oil seal	1	
58	042-2800-000	Grease Ring	3		142	064-2800-210	Spindle	1	
59	043-2800-001	V-Packing	9			067-2800-251	Ball Valve	1	
	043-2800-002	V-Packing	9		143	067-2800-290	Ball Valve, Ceramic	1	(TCS-343)
60	045-2800-000	V-Packing Seat	3		144	060-2800-220	Body Over Flow	1	
61	040-2800-220	Cylinder	1		145	120-1824-000	O-Ring	1	18x3
62	046-2800-000	Grease Cup	3		146	068-2800-250	Ball Valve Seat	1	
63	047-2800-000	Stopper, Grand	2		162	057-1600-000	Coupling	1	1/2"
66	142-0316-001	Screw	2	3/16x3/8"	164	A03-O004-085	Over Flow Hose	1	1/2" x8.5ft
67	144-0308-001	Washer, Spring	4	3/8"	201	923-2200-001	Oil Cap & O-Ring	1	
68	140-0308-002	Bolt	4	3/8x1 1/4"	202	924-1000-000	Oil Gauge & Gasket	1	PF 3/4"
70	030-2801-220	Suction Metal	1		203	925-2200-001	Plug Fuel Drain&Gasket	1	
72	144-0308-001	Washer, Spring	2	3/8"	204	934-2800-000	Screw & Fiy Nut	1	
73	140-0308-002	Bolt	2	3/8x1 1/4"	205	031-1600-002	Core, coupling &Packing	1	1/2"
74	140-0308-004	Bolt	2	3/8x55+S	206	031-2800-002	Core, coupling &Packing	1	1"
78	080-2800-001	Valve Ass'y	6		207	930-2800-000	Over Flow Ass'y	1	122~146 & 204
91	050-2800-220	Discharge Metal	1		208	931-2800-000	Spring Box Ass'y	1	122~134 & 204
92	041-2200-000	Packing	1		209	932-2800-000	Body Over Ass'y	1	138-146
93	052-2801-252	Air Chamber	1						